

INSULATION FOR MANUFACTURED HOUSING AND RV'S

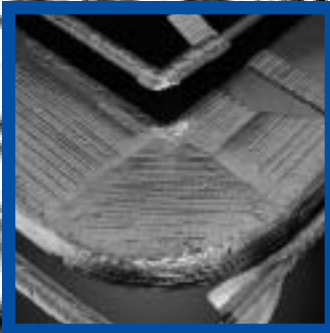
Reflectix, Inc.

A Better Alternative

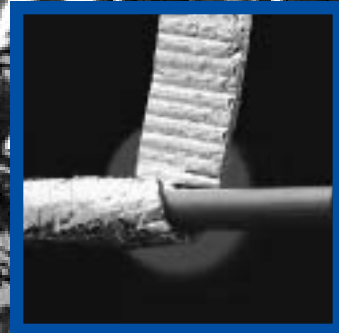
R-V 16.8



R-V 5.6



R-V 4.0



THE WORLD LEADER IN REFLECTIVE
INSULATING TECHNOLOGY

About the Company...

Reflectix has solely dedicated itself to the process of reflective technology and is the world's largest manufacturer of reflective insulation. Founded in 1979, we have built a respected reputation in the markets we serve. From QS 9000 and ISO 9001 certification to worldwide distribution and innovative product development, we have consistently outperformed our customers' expectations. Reflectix has invested in the future and can now offer **product capacity in excess of 1/2 billion sq. ft. to the Manufactured Housing Industry.** Our goal is to develop strategic partnerships with industry leaders to revolutionize the way housing is insulated. We believe that the time has come to seize the opportunity of using reflective technology insulation in the Manufactured Housing Industry.

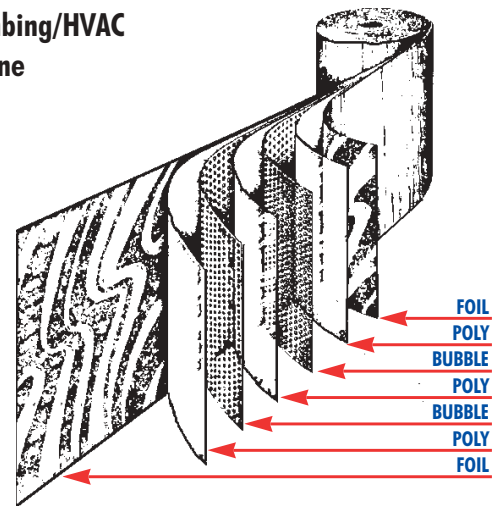
Proven Markets for Reflectix® Insulation:

- Automotive - Big Three
- Medical/Pharmaceutical
- Aviation/Aerospace
- Specialty Sporting Goods
- Energy Efficient Packaging
- Electronic Enclosures
- Food & Beverage
- Specialty Insulated Envelopes
- Residential/Commercial
- OEM
- Over 7,000 Retail locations serviced
- Agriculture
- Plumbing/HVAC
- Marine

About the Product...

Double Bubble:

Reflectix® Insulation is made up of seven layers; two layers of aluminum foil each bonded to a tough layer of polyethylene for strength; two inner layers of bubble for resistance to heat flow or R-Value, with a center layer of polyethylene for added strength.



Applications: Crawl Space • Duct Wrap Insulation • Pipe Wrap Insulation

Benefits:

- Custom Length Rolls (*No Additional Cost*)
- Class A Class 1 Fire Rating
- Environmentally Safe
- Permanent & Maintenance Free
- No Nesting Characteristics for Birds, Insects or Rodents
- Does Not Promote the Growth of Fungi, Mold, or Mildew
- Acts as a Vapor and Radon Barrier
- Labor Savings
- Lightweight and Clean
- Non-toxic and Non-carcinogenic (Listed in medical journals as safe for use with persons suffering from allergies and/or restrictive health conditions)
- Excellent R-Value and Reflects 97% of Radiant Heat (Radiant heat is more than 70% of all heat transferred; Reflective insulation stops this heat loss)
- Working with Reflectix requires no protective garments, respirators, or goggles

About Our Support Services...

- Assistance in the development of POS promotional literature
- On-site and 800 Technical Assistance
- Customer Service Department currently servicing over 7,000 retail locations



Reflective Insulation for Manufactured Housing and RVs

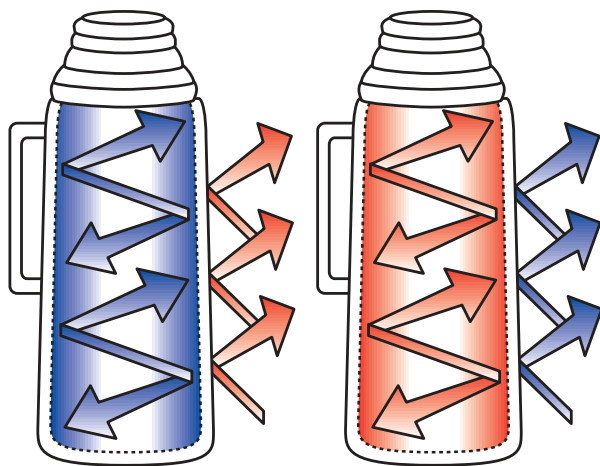
Methods of Heat Transfer: The largest radiant energy source is the sun. A person can feel the sun's radiant energy when walking from the shade into direct sunlight.

- Conduction - Heat flow through matter
- Convection - Heat flow via air movement
- Radiation - Heat transfer via infrared waves, referred to as radiant energy

Reflectivity: A measure of radiant energy that is reflected by the surface of a material without turning into conduction.

Emissivity: A measure of radiant energy passing through the surface of a material.

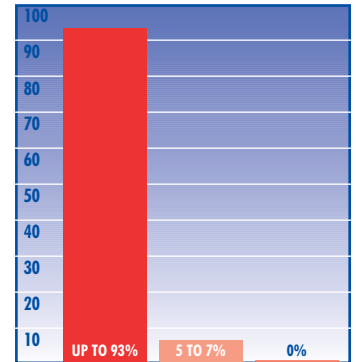
97% Reflectivity + 3% Emissivity = 100%



Examples of internal and external reflectivity

The reflective surface of a thermos jug lining keeps the liquid hot or cold. We all know that. The heat within the thermos is reflected back inside while the **cold outside is reflected away**. Like the thermos jug in the illustration, Reflectix® Insulation reflects and separates "heat" from -60 degrees to a +180 degrees. Remember, when you move from a temperature of -20 degrees to +35 degrees, the higher temperature feels "warm".

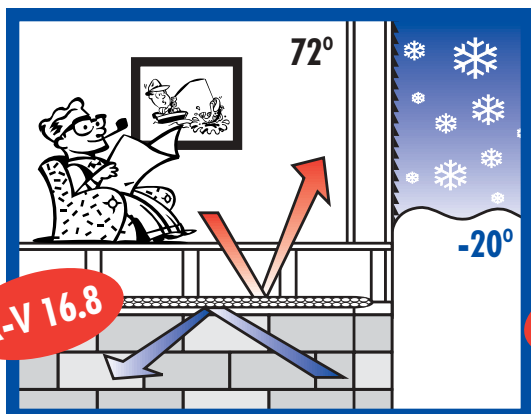
Heat Flow Down



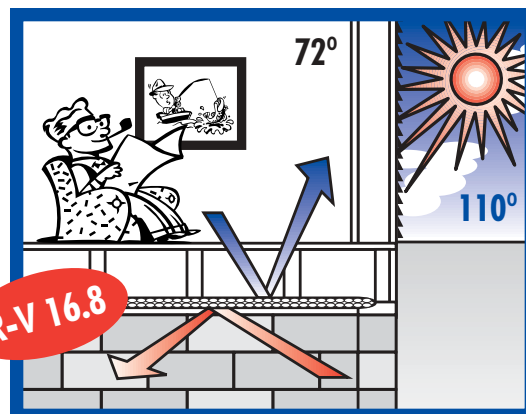
- Radiation
- Conduction
- Convection

When Reflectix® is installed in crawl spaces, the heat rays which flow downward in winter are reflected upward, back into the home at a 97% rate.

Crawl Space Application in Winter



Crawl Space Application in Summer



the home at a 97% rate. The temperature of the cold floors which cause cold feet will be raised and fuel bills reduced, providing for **INCREASED COMFORT**.

As the heat is reflected back into the living area it warms other objects. Those objects radiate heat back into the room increasing your living comfort.

ELIMINATE COLD FLOORS! INCREASE COMFORT! CUT FUEL BILLS!
REFLECTIX® INSULATION - THE INSULATION FOR ALL SEASONS!

About Testing Data Evaluations...

- HUD (HH-I-1252B)
- FHA
- BOCA ES No. 91-49
- ICBO ES No. 4933
- SBCCI ES No. 94102
- CCMC No. 12342-12
- FTC - Compliance
- National Research Council (NRC)

About Our Additional Capabilities...

- Die Cutting
- Custom Widths and Lengths (*No Additional Cost*)
- Sheet Cutting
- Perforating
- Heat Sealing

About Our Technical Data...

Technical Data:

- Thickness: 5/16" (.312m)
- Perm. Rating: .02
- Vapor Transmission: .000
- Emittance: .03
- Tensile Strength: 3.7 N/mm
- Hot Surface Performance: Passed
- Flame Spread: 20 (ASTM E84-98)
SGS, US Testing, Inc.
- Thermal Testing ASTM C236
- Temperature range: -60 degrees to + 180 degrees
- Smoke Density: 30 (ASTM E84-98)
- Puncture Resistance: 60 lbs/in
- Mold Transition: No Growth
- Reflectivity: .97
- Pliability: No Cracking
- Linear Shrinkage: None
- Class A / Class 1 Fire Rating



Reflectix, Inc. • A Better Alternative

P.O. Box 108 • Markleville, IN 46056 • Phone: (888) 875-3645 • Fax: (765) 533-2327

F11